

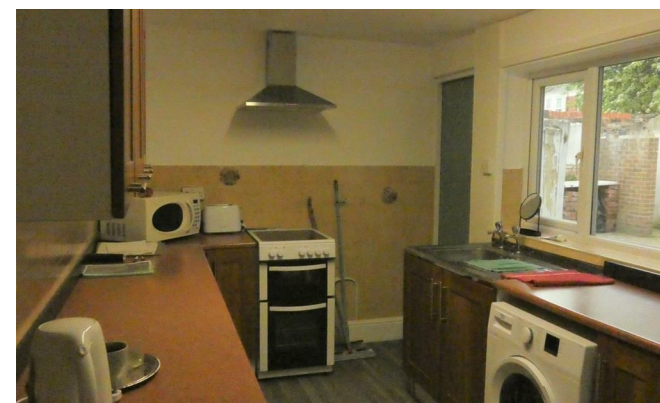


Grantham Road

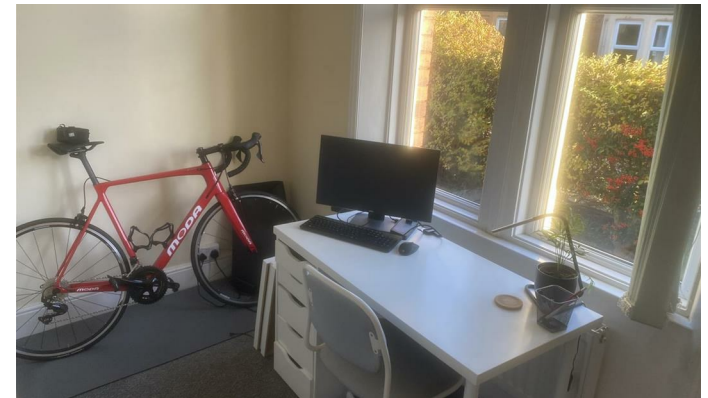
Sandyford, Newcastle Upon Tyne NE2 1QX

- AVAILABLE NOW
- GREAT LOCATION
- LARGE BEDROOM
 - FURNISHED
 - REAR YARD
- £895 PCM
- CLOSE TO ALL AMENITIES
- OFFICE/STUDY ROOM
- GROUND FLOOR
- SUITABLE FOR ONE PERSON OR COUPLE

£895 PCM



Local Authority: Newcastle upon Tyne City Council
Council Tax Band: A
EPC Rating: D



Anderson Properties Lettings
Office
95 St Georges Terrace, Jesmond,
Newcastle Upon Tyne, Tyne And Wear,
NE2 2DN

Contact
0191 2817311
info@andersonproperties.co.uk
www.andersonproperties.co.uk

Agents Note: Whilst every care has been taken to prepare these particulars, they are for guidance purposes only. All measurements are approximate and for general guidance purposes only and whilst every care has been taken to ensure accuracy, they should not be relied upon and potential buyers/tenants are advised to recheck the measurements.